

SUNC - ALUMINIUM PERGOLA



WATERPROOF

SUNSHADING

ELECTRIC OPERATION

ALUMINUM PERGOLA

SUNC

Shanghai SUNC Intelligence Shade
Technology CO.,LTD





关于尚潮

ABOUT US

Shanghai SUNC Intelligence Shade Technology Co., Ltd.

Is a professional manufacture of outdoor garden solutions ,window decorations, intelligent building exterior shading and other sunshading products, which takes a leading position in the same industry.

SUNC has been the top leading professional outdoor sun shading solution maufacture for nearly 14 years.



Aluminium Pergola System

WATERPROOF - BIOCLIMATIC



Aluminium Pergola System from SUNC is a great way to provide all year round weather protection from the elements, with the option of Aluminium Pergola and sides screen creating a totally enclosed area. Aluminum pergola is a European style of high-grade durable goods. waterproof, sunshade and corrosion resistant. Motorized control, intelligent operation, in line with the development trend of modern society.

Application:

- Private residence, villa and other civil areas
- Commercial venues: hotels, restaurants, stores
- Garden supporting facilities engineering

Application Scenarios



Villa



Swimming pool



Balcony



Garden



Barbecue



Restaurant



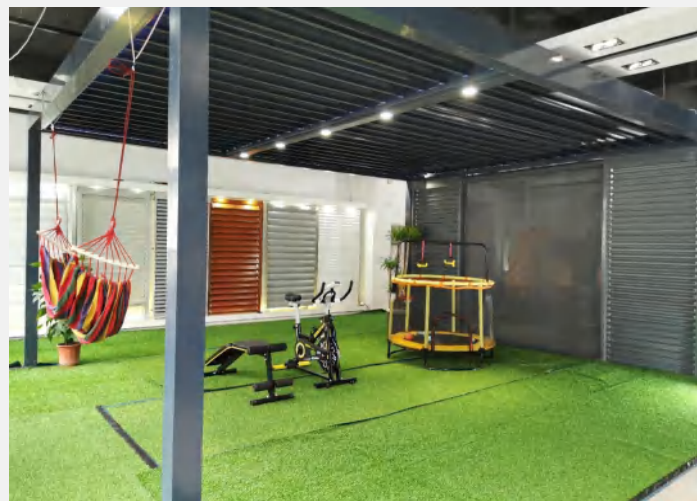
Holiday



Carport



Hotel



Fitness

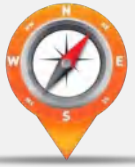


Restaurant



Sun room

Product introduction



location

It is a waterproof shutter with fast production, fast installation, the widest application, the best effect, the most convenient operation and the strongest sense of science and technology.



application area

Residence, swimming pool, balcony, terrace, hotel, garden.



Product introduction

Aluminium pergola in 3 styles:

- ☑ **Crown series**
- ☑ **ECO series**
- ☑ **Royal Manual series**



Product introduction

Function:

- ☑ 0-120 ° opening and closing angle.
- ☑ Blade one key retraction - shading and ventilation
- ☑ Double blade design - heat and sound insulation
- ☑ Waterproof sealing design - 100% waterproof
- ☑ Solar energy storage and power supply - energy saving
- ☑ Wind rain sensing equipment - Intelligent
- ☑ Built in waterproof atmosphere lamp - high end
- ☑ Built in optical fiber star top - Luxury



Aluminium Pergola Description For Crown A Series



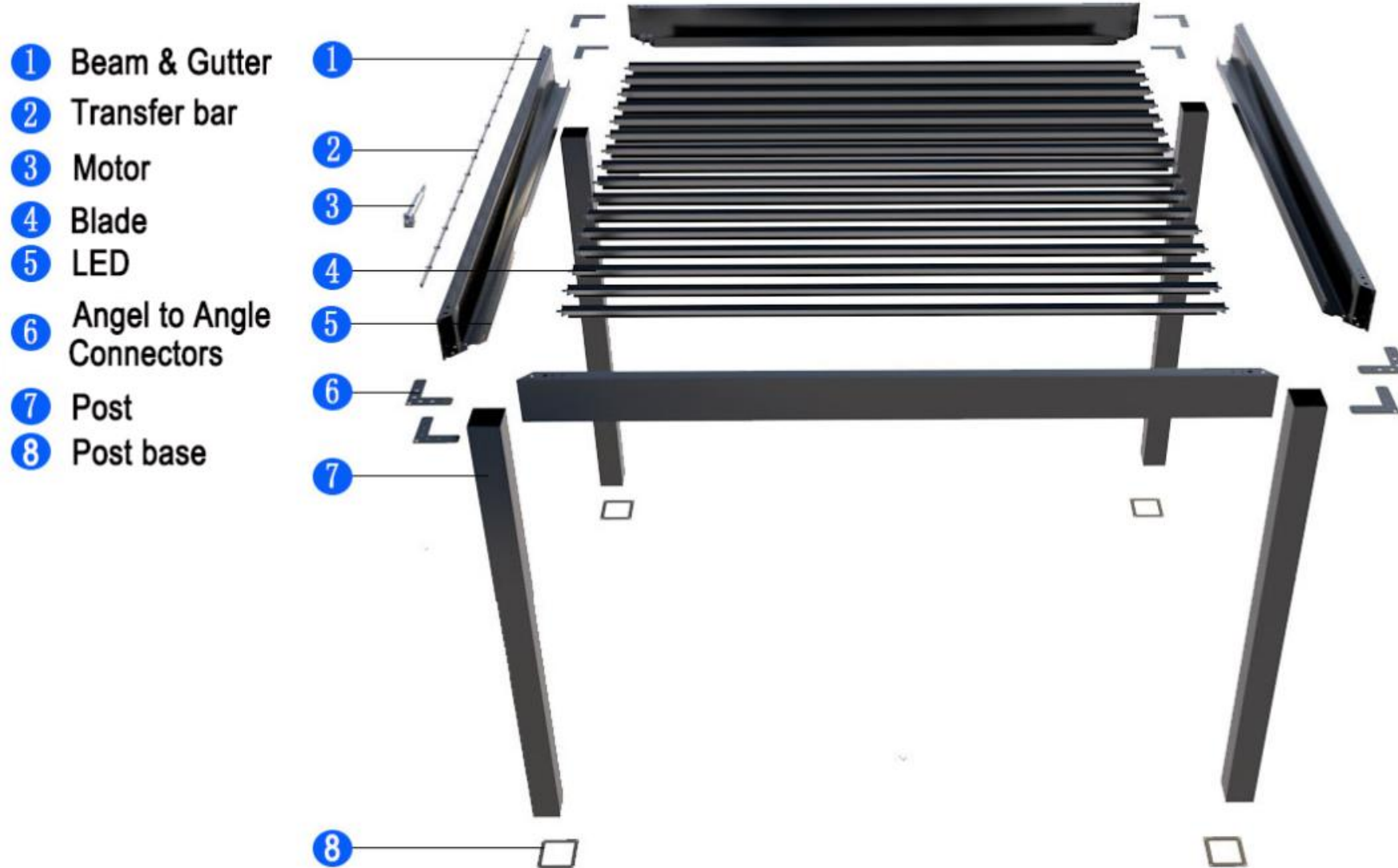
	Blade	Beam	Post
Size	202mm*33mm	202*160mm	150mm*150mm
Thickness of material	2.8mm	3.5mm	2.0mm
Material	Aluminum alloy 6063 T5		
Max safe span range	4000mm	6000mm	2800mm or customized
Color	Dark Grey with Shiny Silver Traffic White and Customized Color According to RAL Color Number		
Motor	Motor can inside and outside (inside keep in 15 square meter, outside keep in 30 square meter)		
LED	Standard LED on blades and in around, RGB can be optional		
Typical Finishes	Durable Powder Coated or PVDF Coating for Exterior Application		
Motor Certification	IP67 testing report, TUV, CE, SGS		

Aluminium Pergola Description For Crown C Series

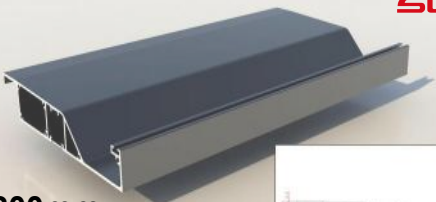


	Blade	Beam	Post
Size	160mm*33mm	160mm*120mm	120mm*120mm
Thickness of material	2.8mm	3.0mm	2.0mm
Material	Aluminum alloy 6063 T5		
Max safe span range	3000mm	4000mm	2800mm or customized
Color	Dark Grey with Shiny Silver Traffic White and Customized Color According to RAL Color Number		
Motor	Motor only can be outside (keep in 30square meter); LED: Standard LED around, RGB can be optional		
Typical Finishes	Durable Powder Coated or PVDF Coating for Exterior Application		
Motor Certification	IP67 testing report, TUV, CE, SGS		

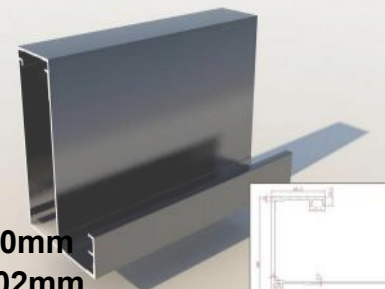
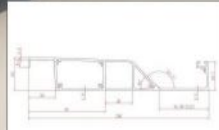
Aluminium Pergola System Introduction



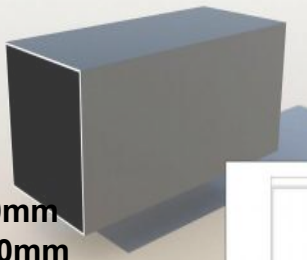
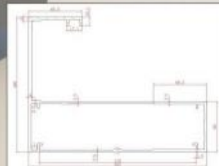
Crown series



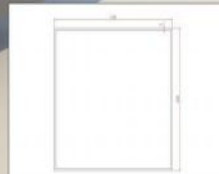
Blade
Width: 200mm
Height: 33mm
Thickness: 2.2mm



Beam
Width: 160mm
Height: 202mm
Thickness: 3.5mm



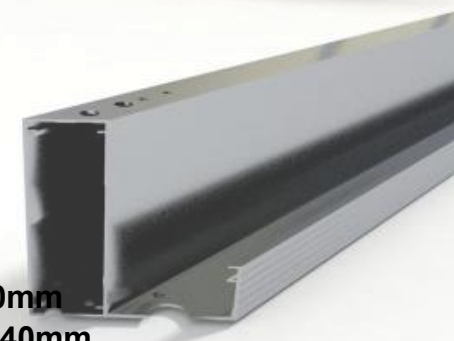
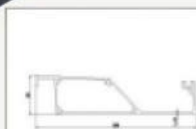
Post
Width: 150mm
Height: 150mm
Thickness: 3mm



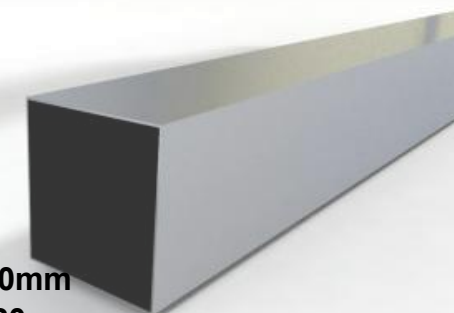
ECO series



Blade
Width: 160mm
Height: 33mm
Thickness: 2.8mm



Beam
Width: 80mm
Height: 140mm
Thickness: 1.8mm



Post
Width: 120mm
Height: 120mm
Thickness: 2.0mm

Royal Manual & Motorized series



Blade

Width: 120mm
Height: 32mm
Thickness: 1.5mm



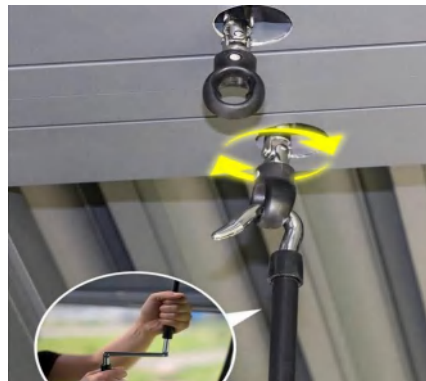
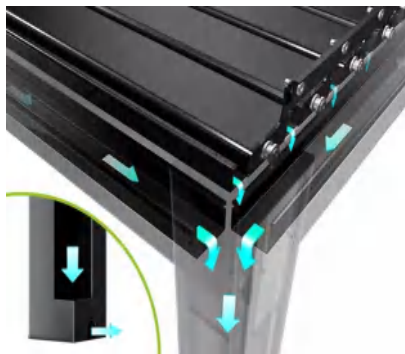
Beam

Width: 80mm
Height: 140mm
Thickness: 1.8mm

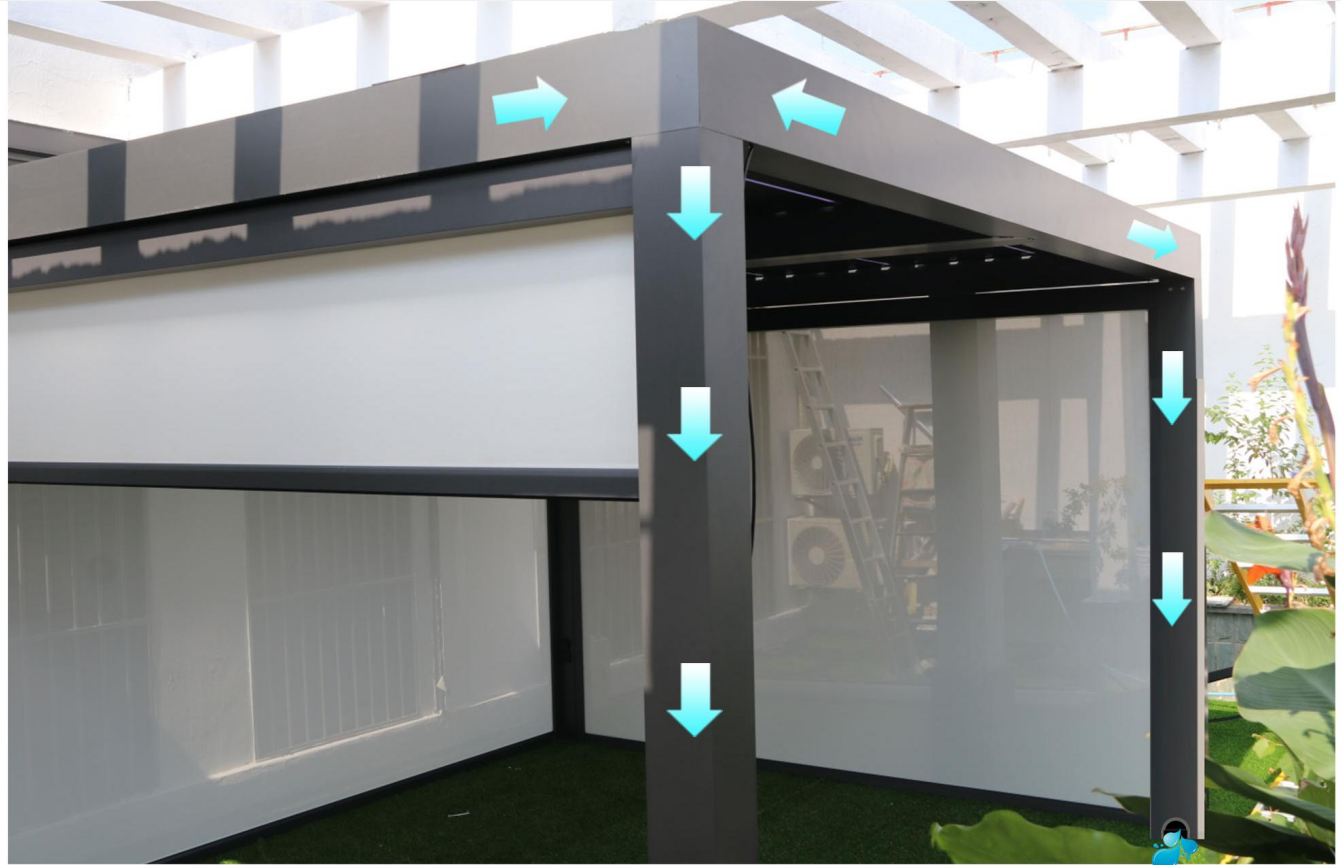


Post

Width: 100mm
Height: 100mm
Thickness: 1.8mm



Drainiag Design



100% Rainproof System

With gutter incorporated into the beam, our system is 100% rainproof effective

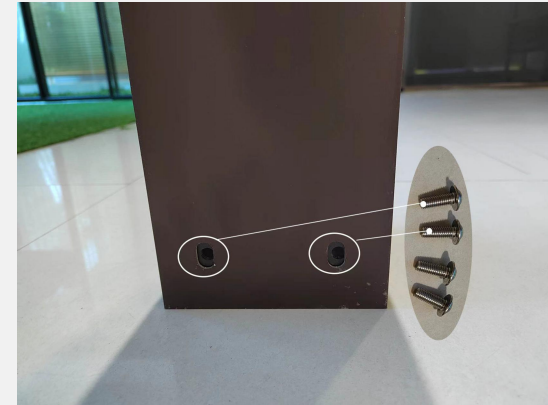


Dimmable Linear LED Lighting

Linear strip led light are dimmable and same length as louver. No leaking screws at the top splicing

Integrated Beam and Gutter Better for Drainage and Waterproof
No Exposed Screws at the Splice

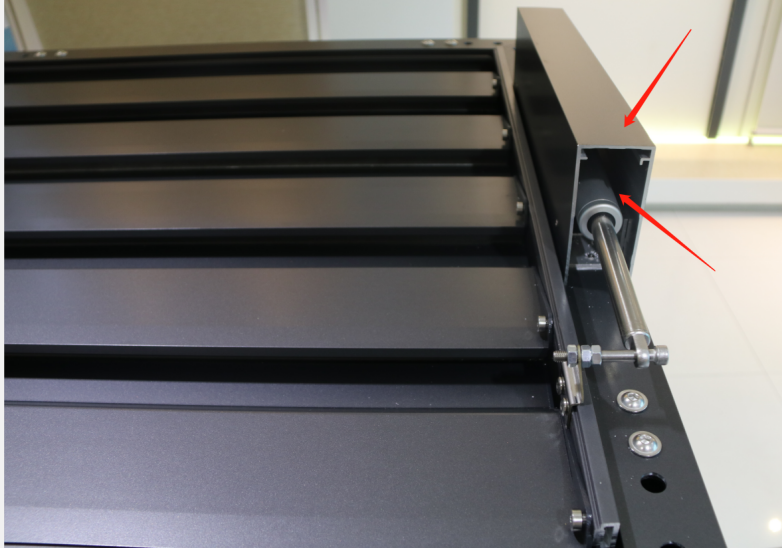
Corner Code Fixed



Easy to install
Fixed firmly
Beautiful design (invisible design)

Motor Position

1. Outside



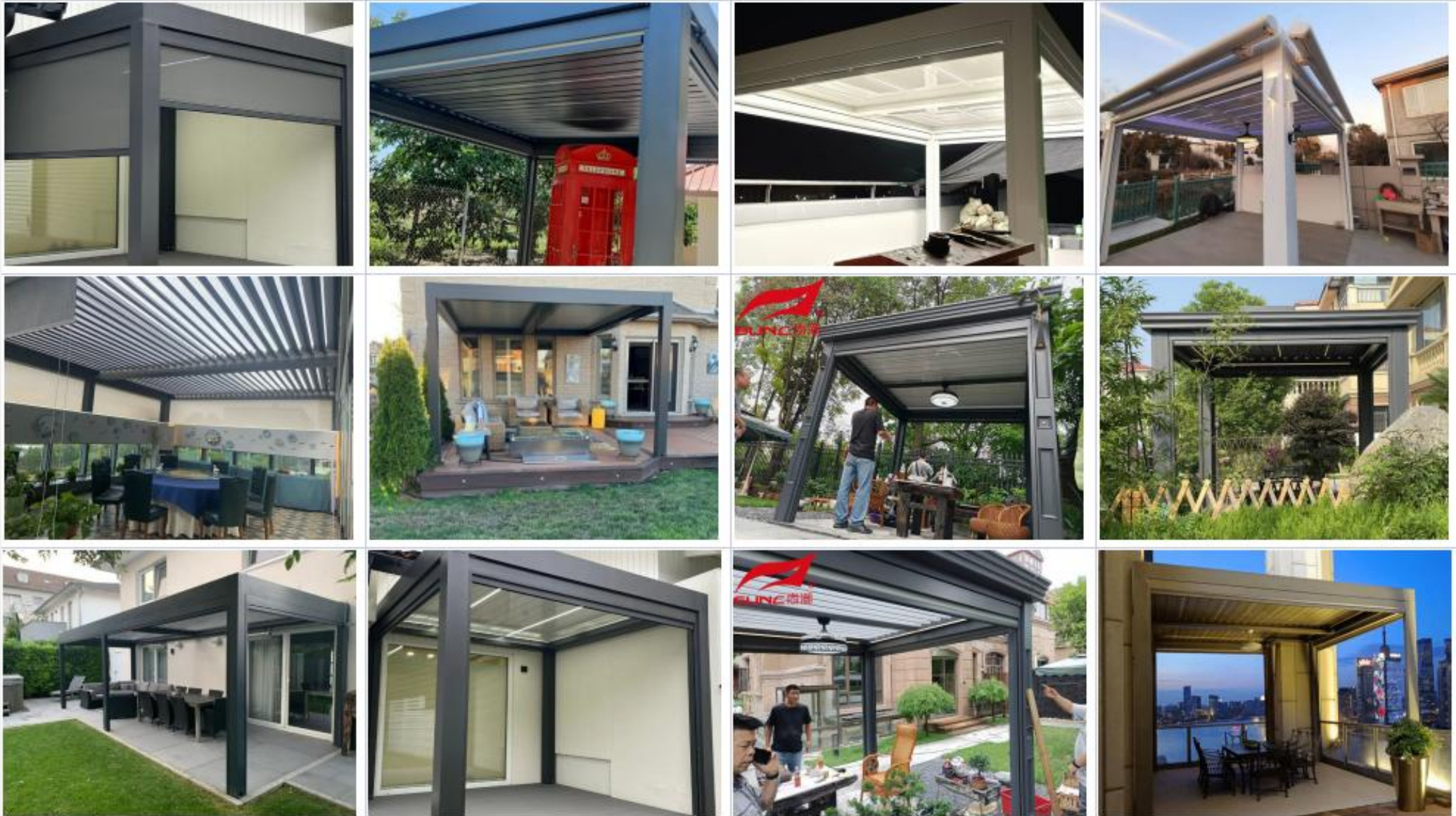
Outdoor professional motor, keep in 30 square meters waterproof grade IP67 and We also have CE certification. And you also can place the motor according to your installation needs .

2. Inside



Indoor professional motor, keep in 15 square meters waterproof grade IP67 and We also have CE certification. Beautiful and easy to install .Also the motor position you can choose.

SUNC Cases



SUNC Cases



Selective Color

Standard color:white/grey

Custom Color

Our products have a variety of colors for you to choose from.



Note:

The color is subject to the actual object, and the conventional color can be customized (According to raul's color card)



White



Grey



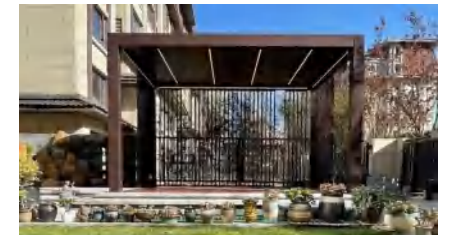
you can custom other color,sunch as black or brown



Black



Brown



Installation mode



① Bilateral column



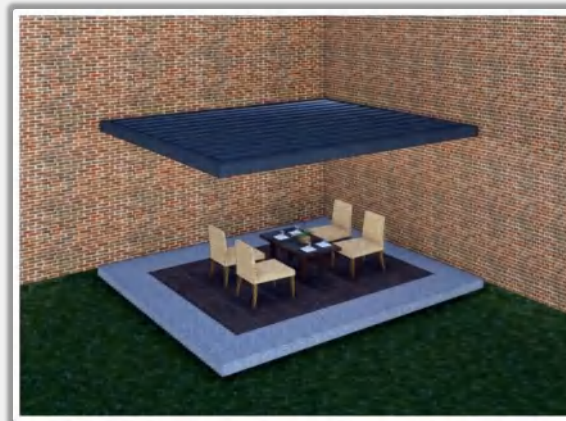
② Unilateral column



③ Single side multi column



④ Bilateral multi column



⑤ Card wall type



⑥ Wall mounted

Optional function



heater

I'll give you the warmth you want



Mobile app control

Intelligent life, enjoy life



Invisible fan lamp

Enjoy the natural wind with one touch technology



Wind rain sensing

The weather changes well, help, go out 0 worry



Atmosphere lamp

The magician of light adds color to life



Embedded LED lamp

Hide yourself and light up the space, simple



Optical fiber star top

Romantic starry sky

Accessory products

Windproof
roller shutter

Frameless
sliding
door

Sliding
door

Folding
sliding
door

Outdoor
shutter



Peripheral supporting

Fan light

Windproof roller shutter

Wind rain sensing

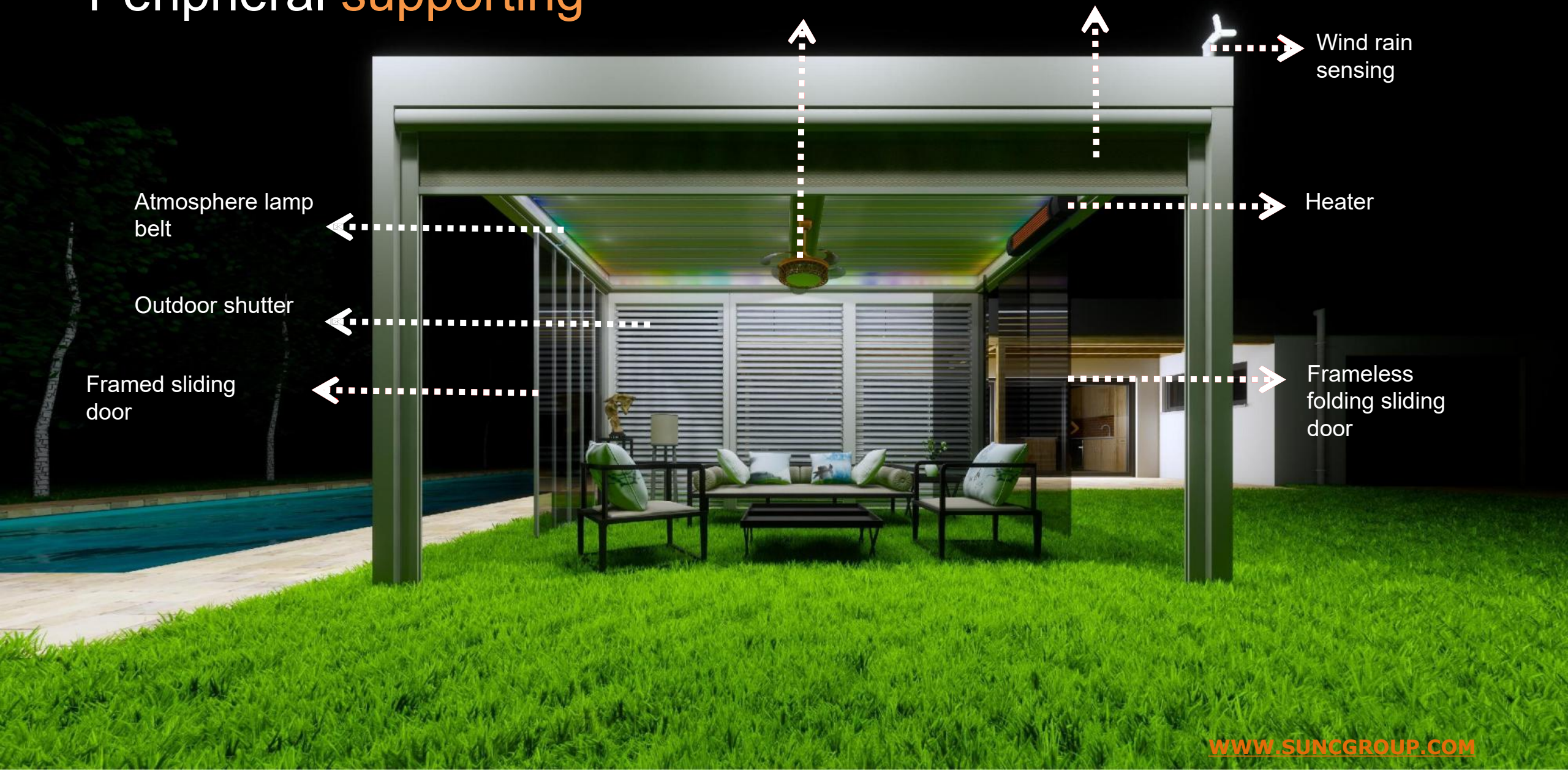
Heater

Frameless folding sliding door

Atmosphere lamp belt

Outdoor shutter

Framed sliding door



Aluminium Pergola System

Functions

Wind Resistance

Adjust louver to close ,effectively prevent wind.
Zip track can be match purchase together,Then can be in the wind for you to build a warm viewing place.



Sun Resistance

Operate blade closure to effectively block UV.
Operate blade to Open ,so you can feel the sunlight scattering you build your own outdoor viewing deck.



Waterproof

Operating blade closure can effectively block rain water.

